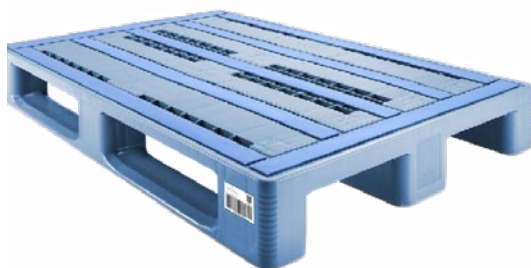


Pallet

WBG-Pooling-L1-Logistic Pallet light blue



external dimensions
1200 x 800 x 150 mm



tare weight
20 kg



bottom
3 runners



color
light blue, like
Pantone 298C



static load capacity
7500 kg



temperature resistance
-30°C to +40°C



material
HDPE



label
On-mould label on both
long sides



dynamic load capacity
1250 kg

Withstands everything:
Our reusable pallet is robust
and also suitable for cold stores.

- increased load due to integrated profile
- tracing of individual pallets due to Smart Labels
- anti-slide coating on the deck & under the runners
- external locking mechanism

A food-safe, robust plastic pallet that is also suitable for cold chain logistics. The load carrier is also suitable for direct food contact.

Available in industry size and Euro measure. The L1 pallet is even identical in construction to the euro pallet. Made in a single-piece injection molding process from high-quality PE, it is extremely robust.

Due to its height of only 150 mm, it is the ideal plastic pallet for intra logistics, offering consistent quality with increasing cycles, as well as being maintenance- and trouble-free.

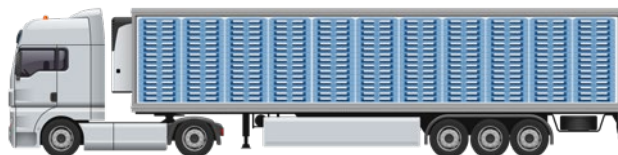
Product
video



Pallet

WBG-Pooling-L1-Logistic Pallet light blue

Logistics



Trailer Space Utilization

quantity per pallet	spaces per trailer	quantity per trailer
14/15	33	462/495

Gallery



Compatible with

Similar products



WBG-Pooling-Foldable-Crate 6422 black

- 600 x 400 x 219 mm
- 1,95 kg
- 44 l



E2-Performance-Crate light blue

- 600 x 400 x 200 mm
- 2,0 kg
- 40 l



WBG-Pooling-L3-Logistic Pallet light blue

- 1200 x 1000 x 160 mm
- 26 kg
- 7500 kg



Euro-H1-Hygienic-Pallet light grey

- 1200 x 800 x 160 mm
- 18 kg
- 5000 kg



Euro-H3-Hygienic-Pallet light grey

- 1200 x 1000 x 160 mm
- 22 kg
- 5000 kg